

# AN ENGLISH CHRISTMAS

A Festival of Carols for Brass Band with optional SATB Choir

E♭ Bass

Philip Sparke

**Allegro gioioso**

## 5 SUSSEX CAROL

Musical score for 'Sussex Carol' for E♭ Bass. The score is in 6/8 time and consists of 48 measures. It begins with a 3-measure rest, followed by a *mf* dynamic. The piece features various rhythmic patterns, including eighth and sixteenth notes, and rests. The key signature has two sharps (F# and C#). The score ends with a double bar line and a key signature change to three sharps (F#, C#, G#).

Musical score for 'In the Bleak Mid-Winter' for E♭ Bass. The score is in 4/4 time and consists of 94 measures. It begins with a 55-measure rest, followed by a *p* dynamic. The piece is marked *rall.* and *Andante*. It features a variety of note values, including half notes, quarter notes, and eighth notes. The key signature has three sharps (F#, C#, G#). The score ends with a double bar line and a key signature change to two flats (B♭ and E♭). Handwritten annotations include 'acc.' and 'trape' with arrows pointing to measures 94 and 95 respectively.

E♭ Bass

**GOD REST YOU MERRY, GENTLEMEN**

95 **Moderato**

Handwritten: *in 2*

*pp*

107 *mp*

111 *f*

117 *pp*

129 *mp*

133 *f*

141 **Swing** *ff*

**Straight** *pp* *legato* *ff*

153

E♭ Bass

ONCE IN ROYAL DAVID'S CITY

161 Andante 3 one 167 7 175 4 2

*mf* *p*

183

190 poco rall. 195 Più mosso

*mp sub.*

199 Allegro accel.

*mf* *f*

204 Brightly accel.

*f*

210 I SAW THREE SHIPS

218

230

*mp* *f*

E♭ Bass

238



250



258



2

rall.



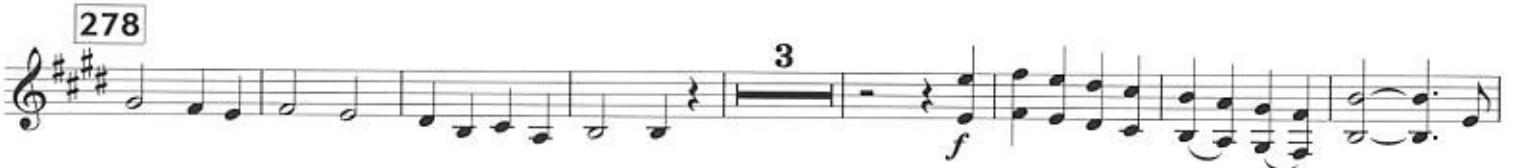
O COME, ALL YE FAITHFUL

270

Maestoso



278



290



298



309 Vivo

